

# WE MAKE YOUR MACHINE TOOL FUTURE-PROOF

Milling, drilling, cutting, bending or winding – movements in tool machines require high precision, smooth running and speed.

# HIWIN®

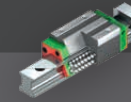
## Ballscrews

Mostly ground or peeled, their minimal frictional resistance, high load capacity, and backlash-free or preloaded running enable precise positioning, maximum feed forces, and repeatable machining. On request, we also offer special designs with customized geometry, increased feed forces, or higher dynamic response – always with the appropriate bearings.



## Ball guides

Robust and durable, they ensure precise and low-friction linear motion, as found, for example, in infeed and outfeed handling systems, magazines, or tool changers. Thanks to their high reliability, rigidity, and load capacity, they ensure precise axis positioning even under high process forces. We offer a wide selection of ball guides and matching accessories.



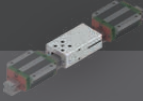
## Roller guides

Due to their very high load capacity and rigidity, they are often used as main guides in the X, Y and Z axes. Their even force distribution enables precise axis movements with stable, backlash-free running – even under high forces. With our RG and UR series, we offer an extremely durable and resistant solution for demanding industrial processes.



## Brake and clamping elements

They are reliable components for securing axes against unwanted movements. They hold positions under load and ensure repeatable fixation. This guarantees stability, safety, and precise machining results, even in dynamic response processes. Efficient production is thus ensured, and both the machine and operator are protected.



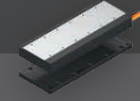
## Torque motors

Deliver direct, highly dynamic torque without additional gearboxes. In relatively small installation spaces, they enable precise, backlash-free movements and high acceleration rates with consistent stability – even under high loads. Thanks to direct load coupling, they are particularly suitable for rotary axes in turning and milling centers where tools or workpieces need to be accelerated quickly and positioned precisely. We also offer torque motors with liquid cooling.



## Linear motors

They generate direct, contactless movements with maximum dynamic response and precision, enabling rapid acceleration, backlash-free positioning and consistent stability over the entire travel distance. This ensures precise machining results, even in demanding high-speed processes. On request, we also offer UL-certified motors with a highly efficient cooling system.



## DATORKER® strain wave gears

Transmit torques without backlash-free and with high precision. Thanks to their compact design and even force distribution, they enable precise positioning and control of tools and workpieces, even under changing loads. This ensures stable, repeatable movements. We offer sealed strain wave gearboxes and gearboxes with direct motor connection with a wide range of customization options.

